



MEETINGS & CORPORATE EVENTS

THE
SOUTHCREST
MANOR HOTEL

Located in the heart of Worcestershire, surrounded by 10 acres of mature gardens and woodland yet only 3 miles from junction 3 of the M42 giving easy access to the motorway links of the M40, M5 & M6, the Southcrest Manor Hotel is the perfect place to sit down to business.

From interviews to large outdoor team building, we can organise and manage your event, offering you an individual and professional service from initial enquiry until the time you leave.

KEY FACTS

- Meeting & Event space that can accommodate 2 to 120 delegates
- Outdoor Team Building
- Top of the Range Equipment
- Flexible Menus
- 63 bedrooms that are flexible to your needs, offering a choice of double, twin and triple occupancy
- Free High Speed WiFi
- Free Parking for up to 150 vehicles
- Restaurant & Bar
- Elemis approved Manor Health & Beauty Club
- Preferred Accommodation Rates
- Fully equipped Gymnasium, Swedish & Infrared Saunas & Outdoor Hydrotherapy Hot Tub

MEETING & EVENT SUITES

Suite	Location	Maximum Capacity	Heating Controls	Natural Daylight	Blackout Facility	Length (ft)	Width (ft)	Height (ft)	Area (sq ft)
Auxerre Suite	Ground Floor	120	Yes	Yes	Yes	56	18	11	1008
Terry Suite	First Floor	50	Yes	Yes	Yes	30	18	10	540
Kingfisher Suite	First Floor	30	Yes	Yes	Yes	22	16	10.8	352

MEETING & EVENT CAPACITIES

Suite	Theatre	Classroom	U-Shape	Boardroom	Cabaret	Informal
Auxerre Suite	120	50	44	44	45	80
Terry Suite	50	18	22	25	24	30
Kingfisher Suite	30	12	12	16	n/a	20

TEAM BUILDING ACTIVITIES

Set within 10 acres of private grounds and woodland, the Southcrest Manor Hotel offers plenty of space for outdoor team building activities. Please discuss your requirements with a member of the Events Team.

MEETING & EVENT ROOM HIRE CHARGES

Suite	Full Day	Half Day	Evening
Auxerre Suite	£495.00	£250.00	£195.00
Terry Suite	£295.00	£150.00	£125.00
Kingfisher Suite	£195.00	£85.00	£100.00

ADDITIONAL ITEMS

Tea & Coffee	£1.95 per person
Tea, Coffee & Biscuits	£2.95 per person
Tea, Coffee & Pastries	£3.25 per person
Tea, Coffee & Cake	£3.25 per person
Biscuits	£1.00 per person
Pastries	£1.95 per person
Fruit Juice (Orange/Apple)	£1.50 per person
Bacon / Sausage / Egg / Mushroom & Tomato Rolls	£4.95 per person
Mineral Water - Sparkling & Still	£4.95 per bottle
Platter of Fruit (serves 10)	£18.95 per platter

EQUIPMENT HIRE CHARGES

LCD Projector	£25.00 per day
Screen	£15.00 per day
Flipchart Stand, Pad & Pens	£15.00 per day
Flipchart Pad	£10.00 each
Delegate Pens & Pads	£2.95 per delegate

Additional AV equipment requirements can be accommodated - please ask for details.

DAY DELEGATE RATE £39.95 PER PERSON

(Minimum number of 10 delegates)

- Meeting & Events Host
- Hire of Main Meeting Room
- Stationary Tool Box
- LCD, Screen & Flipchart
- Delegate Pads & Pens
- Iced Water, Sweets & Fruit
- Arrival Tea, Coffee, Pastry & Fruit
- Midmorning Tea, Coffee, Biscuits & Fruit
- Afternoon Tea, Coffee, Cake & Fruit
- Free Parking
- Free Highspeed Wifi
- Delegate Lunch (Choose from either a Finger Buffet served in your meeting room or a Hot Fork Buffet served in the Restaurant)

24 HOUR DELEGATE RATE £139.95 PER PERSON

(Minimum number of 10 delegates)

- Meeting & Events Host
- Hire of Main Meeting Room
- Stationary Tool Box
- LCD, Screen & Flipchart
- Delegate Pads & Pens
- Iced Water, Sweets & Fruit
- Arrival Tea, Coffee, Pastry & Fruit
- Midmorning Tea, Coffee, Biscuits & Fruit
- Delegate Lunch (Choose from either a Finger Buffet served in your meeting room or a Hot Fork Buffet served in the Restaurant)
- Afternoon Tea, Coffee, Cake & Fruit
- Free Parking
- Free Highspeed WiFi
- Three Course Dinner
- Overnight Accommodation
- Full English Breakfast
- Use of fully equipped gymnasium, outdoor hydrotherapy hot tub* & Swedish & Infrared saunas* (Hot Tub & Sauna's pre-bookable)

MEETING & EVENTS MENU SELECTIONS

HOT BUFFET SELECTION

Sausage & Sage Roulade
Lamb Kofta Kebab, Minted Yoghurt
Breaded Chicken Goujons, BBQ Dip
Garlic Pizza Bread (v)
Potato Shells with Cheese & Bacon
Chicken Tikka Skewer
Indian Snack Selection & Dips (v)
Lattice/Wedge/Fries (select 1) (v)
Chinese Dim Sum Selection & Dips
Breaded King Prawns
Mini Beef Burger
Goats Cheese & Red Onion Tarts (v)

5 ITEMS £19.95 PER PERSON

Please choose items from any of the above hot or cold selection.
Additional Buffet Items are charged at £2.50 per person.

COLD BUFFET SELECTION

Selection of Sandwiches
Mini Smoked Salmon Bagels
Duo of Quiches (v)
Gala Pie
Vegetable Crudities (v)
Seafood Platter
Continental Meat Platter
Manor Dressed Salad (v)
Coleslaw (v)
Potato Salad (v)
Selection of Bread, Oils
& Marinated Olives (v)

SANDWICH LUNCH

£7.95 PER PERSON

Assorted selection of freshly prepared Sandwiches on white and brown bread
Fries
Side Salad

SANDWICH BUFFET

£12.95 PER PERSON

Assorted selection of freshly prepared Sandwiches served on White and Brown Breads

Egg Mayonnaise
& Salad Cress

Honey Roasted Ham

Tuna & Red Onion

Farmhouse Mature Cheddar & Pickle

Coronation Chicken Wraps

Mature Cheddar
& Spring Onion Wraps

Chips

Breaded Chicken Fillets

Potato & Chive Salad

Trio of Quiche

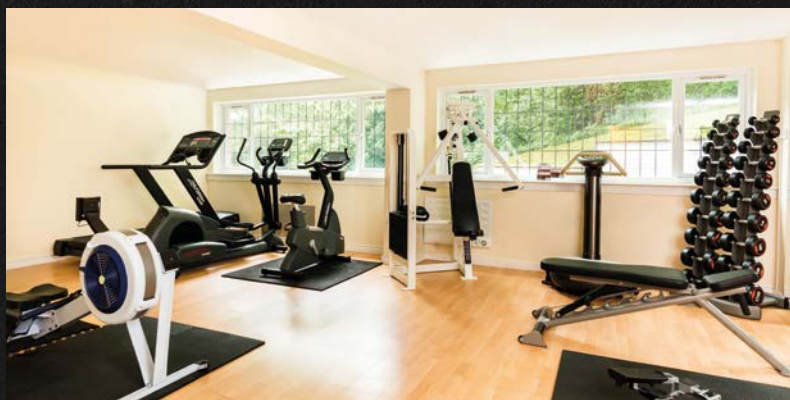
HOT FORK BUFFET £17.95 PER PERSON

(Minimum numbers 20 guests)

Beef Lasagne
Garlic Bread
Chicken Balti
Basmati Rice
Vegetable Noodle Stir Fry
Chips
Mixed Salad
Coleslaw
Selection of Mini Desserts

Jugs of Orange Juice & Iced Water will be served with all Lunch options

Add a selection of Mini Desserts for £2.50 per person



THE
SOUTHCREST
MANOR HOTEL

Pool Bank, Southcrest, Redditch, Worcestershire B97 4JS

Tel: 01527 541511

Email: events@southcrestmanorhotel.com

www.southcrestmanorhotel.com